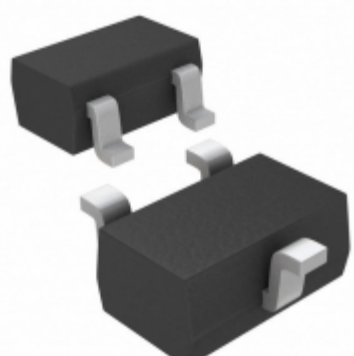


MAX810SEXR+T



Part Number: [MAX810SEXR+T](#)
Manufacturer: [Maxim Integrated](#)
Description: IC RESET CIRC MPU SC70-3
Data sheet: [MAX803,809,810](#)
[Part Numbering System](#)

RoHS Status: Lead free / RoHS Compliant
Ship From: Hong Kong
Shipment Way: DHL/Fedex/TNT/UPS/EMS

Images are for reference only.
 See Product Specifications for product details.
Buy MAX810SEXR+T with confidence from Component-World.HK, 1 Year Warranty

[Request For Quotation](#)

PRODUCT PARAMETER

Part Number	MAX810SEXR+T	Manufacturer	Maxim Integrated
Description	IC RESET CIRC MPU SC70-3	Lead Free Status / RoHS Status	Lead free / RoHS Compliant
Quantity Available	34306 pcs	Data sheet	MAX803,809,810 Part Numbering System
Category	Integrated Circuits (ICs)	Voltage - Threshold	2.93V
Type	Simple Reset/Power-On Reset	Supplier Device Package	SC-70-3
Series	-	Reset Timeout	140 ms Minimum
Reset	Active High	Packaging	Strip
Package / Case	SC-70, SOT-323	Output	Push-Pull, Totem Pole
Other Names	MAX810SEXR+ MAX810SEXR+TTR MAX810SEXR+TTR-ND	Operating Temperature	-40°C ~ 125°C (TA)
Number of Voltages Monitored	1	Mounting Type	Surface Mount
Moisture Sensitivity Level (MSL)	1 (Unlimited)	Lead Free Status / RoHS Status	Lead free / RoHS Compliant
Detailed Description	Supervisor Push-Pull, Totem Pole 1 Channel SC-70-3	Base Part Number	MAX810

Component-World.com is a Reliable Stocking Distributor of Electronic Components. We specialize in all Maxim Integrated series electronic components. We have 34306 pieces of Maxim Integrated MAX810SEXR+T in stock available now. Request a quote from electronics components distributor at Component-World.com, our sales team will contact you within 24 hours.

RFQ Email: info@Components-World.com

RELATED PRODUCTS

	Part#: MAX810SQ263T1G Description: IC MPU RESET MON 2.63V SOT-323	Manufacturers: AMI Semiconductor / ON Semiconductor	RFQ
	Part#: MAX810REUR-T Description: IC MPU SUPRVSRY CIRC 2.63V SOT23	Manufacturers: Maxim Integrated	RFQ
	Part#: MAX810SQ293D3T1G Description: IC MPU RESET MON 2.93V SOT-323	Manufacturers: AMI Semiconductor / ON Semiconductor	RFQ
	Part#: MAX810MEXR+T Description: IC RESET CIRC MPU SC70-3	Manufacturers: Maxim Integrated	RFQ
	Part#: MAX810SN293D1T1G Description: IC MPU RESET MON 2.93V SOT-23	Manufacturers: AMI Semiconductor / ON Semiconductor	RFQ
	Part#: MAX810SEUR+T Description: IC MPU/RESET CIRC SOT23-3	Manufacturers: Maxim Integrated	RFQ
	Part#: MAX810REXR+T Description: IC RESET CIRC MPU SC70-3	Manufacturers: Maxim Integrated	RFQ
	Part#: MAX810SQ293T1G Description: IC MPU RESET MON 2.93V SOT-323	Manufacturers: AMI Semiconductor / ON Semiconductor	RFQ
	Part#: MAX810RTRG Description: IC MPU RESET MON 2.63V SOT-23	Manufacturers: AMI Semiconductor / ON Semiconductor	RFQ
	Part#: MAX810RTR Description: IC MPU RESET MON 2.63V SOT-23	Manufacturers: AMI Semiconductor / ON Semiconductor	RFQ
	Part#: MAX810MTR Description: IC MPU SUPERVISORY 4.38V SOT23	Manufacturers: AMI Semiconductor / ON Semiconductor	RFQ
	Part#: MAX810SQ293D1T1G Description: IC MPU RESET MON 2.93V SOT-323	Manufacturers: AMI Semiconductor / ON Semiconductor	RFQ
	Part#: MAX810SQ293D2T1G Description: IC MPU RESET MON 2.93V SOT-323	Manufacturers: AMI Semiconductor / ON Semiconductor	RFQ
	Part#: MAX810SN293D2T1G Description: IC MPU RESET MON 2.93V SOT-23	Manufacturers: AMI Semiconductor / ON Semiconductor	RFQ
	Part#: MAX810SQ120T1G Description: IC MPU RESET MON 1.20V SOT-323	Manufacturers: AMI Semiconductor / ON Semiconductor	RFQ
	Part#: MAX810MEUR+T10 Description: IC RESET CIRC MPU SOT23-3	Manufacturers: Maxim Integrated	RFQ
	Part#: MAX810MTRG Description: IC MPU SUPERVISORY 4.38V SOT23	Manufacturers: AMI Semiconductor / ON Semiconductor	RFQ
	Part#: MAX810REUR+T Description: IC RESET CIRC MPU SOT23-3	Manufacturers: Maxim Integrated	RFQ
	Part#: MAX810SN293D3T1G Description: IC MPU RESET MON 2.93V SOT-23	Manufacturers: AMI Semiconductor / ON Semiconductor	RFQ
	Part#: MAX810SN120T1G Description: IC MPU RESET MON 1.20V SOT-23	Manufacturers: AMI Semiconductor / ON Semiconductor	RFQ

Related keywords for MAX810SEXR+T

Maxim Integrated MAX810SEXR+T	MAX810SEXR+T distributor	MAX810SEXR+T supplier	MAX810SEXR+T price
MAX810SEXR+T download datasheet	MAX810SEXR+T datasheet	MAX810SEXR+T stock	buy MAX810SEXR+T
Maxim Integrated MAX810SEXR+T			